

PALATA CVIJIĆEVA

Nova dimenzija luksuza
A new dimension of luxury

E I I C S
T A C
T I E
K A
EXCLUSIVE CONSTRUCTIONS





PALATA CVIJIĆEVA
Nova dimenzija luksuza



CVIJIĆEVA PALACE



Dobro došli u Palatu Cvijićeve. Bajkoviti luksuz obasjan elegancijom nudi novi koncept urbanog života svojim rezidentima. Na raskršću dveju ulica imenovanih u čast dva naučnika svetskog kalibra, Jovana Cvijića i Anrija Poenkarea, ovo vanvremensko zdanje će zauzeti isto takvo mesto u svetu neoklasične arhitekture...

Kada su članovi tima osmišljavali projekat Palate Cvijićeve, namera je bila da se budućim vlasnicima stanova omogući život u novoj dimenziji luksuza. Ono što će posetioci Palate Cvijićeve prvo primetiti pri ulasku u zgradu jeste elegantan i raskošan lobi sa visinom plafona od oko 6 metara, koja dodatno doprinosi estetici prostora, obložen najekskluzivnijim materijalima od prirodnog kamena i drveta.

Palata Cvijićeve koja se prostire na 9,950 kvadratnih metara sa lepim pogledom na reku učiniće da se vas život pretvori u bajku koja se svakog dana iznova i iznova doživljava.

Reči kojima možemo opisati ovo graciozno zdanje su: komfor, unikatan dizajn i vrhunski kvalitet života u gradu. Jedinstveni koncept Palate Cvijićeve dominira nad ostalim arhitektonskim projektima i svojom pojavom oplemenjuje izgled celog grada.

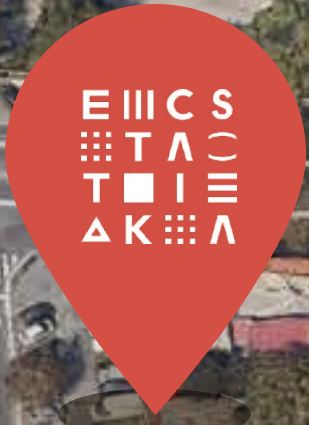
Welcome to the Cvijićeva Palace. Fabulous luxury illuminated by elegance offers a new concept of urban life to its residents. At the crossroads of two streets named after two world-class scientists, Jovan Cvijić and Henri Poincare, this timeless building will occupy the same place in the world of neoclassical architecture ...

When the team members designed the Cvijićeva Palace project, the intention was to enable future apartment owners to live in a new dimension of luxury. What visitors to the Cvijićeva Palace will first notice when entering the building is the elegant and luxurious lobby with a ceiling height of about 6 meters, which further contributes to the aesthetics of the space, lined with the most exclusive materials of natural stone and wood.

The Cvijićeva Palace, which spreads over 9,950 square meters with a beautiful view of the river, will make your life turn into a fairy tale that is experienced again and again every day.

The words with which we can describe this graceful building are: comfort, unique design and top quality of life in the city. The unique concept of the Cvijićeva Palace dominates over other architectural projects and enriches the appearance of the entire city with its appearance.

LOKACIJA



Sa više od 90 varijacija planova za stanove i penthouse prostore, napravljena je nulta tolerancija po pitanju kompromisa kvaliteta gradnje i funkcionalnosti svakog stana.

Termička i zvučna otpornost kompletnog objekta je u nivou predratne gradnje, i u skladu su sa najvišim standardima iz oblasti energetske efikasnosti, o čemu svedoči i energetski pasoš koji zgrada poseduje, kao energetska zgrada, sa smanjenom potrošnjom električne energije i grejanja.

Svi stambeni apartmani imaju pristup zajedničkom uređenom prostoru punom zelenila, pored izdašnih balkona i terasa. Objekat obučen u visoko kvalitetan prirodni kamen, beli mermer "Carrara bianco", kovano gvožđe na terasama i najkvalitetnije materijale na tržištu u svetu, suptilne varijacije boja i materijala stvaraju prepoznatljiv identitet.

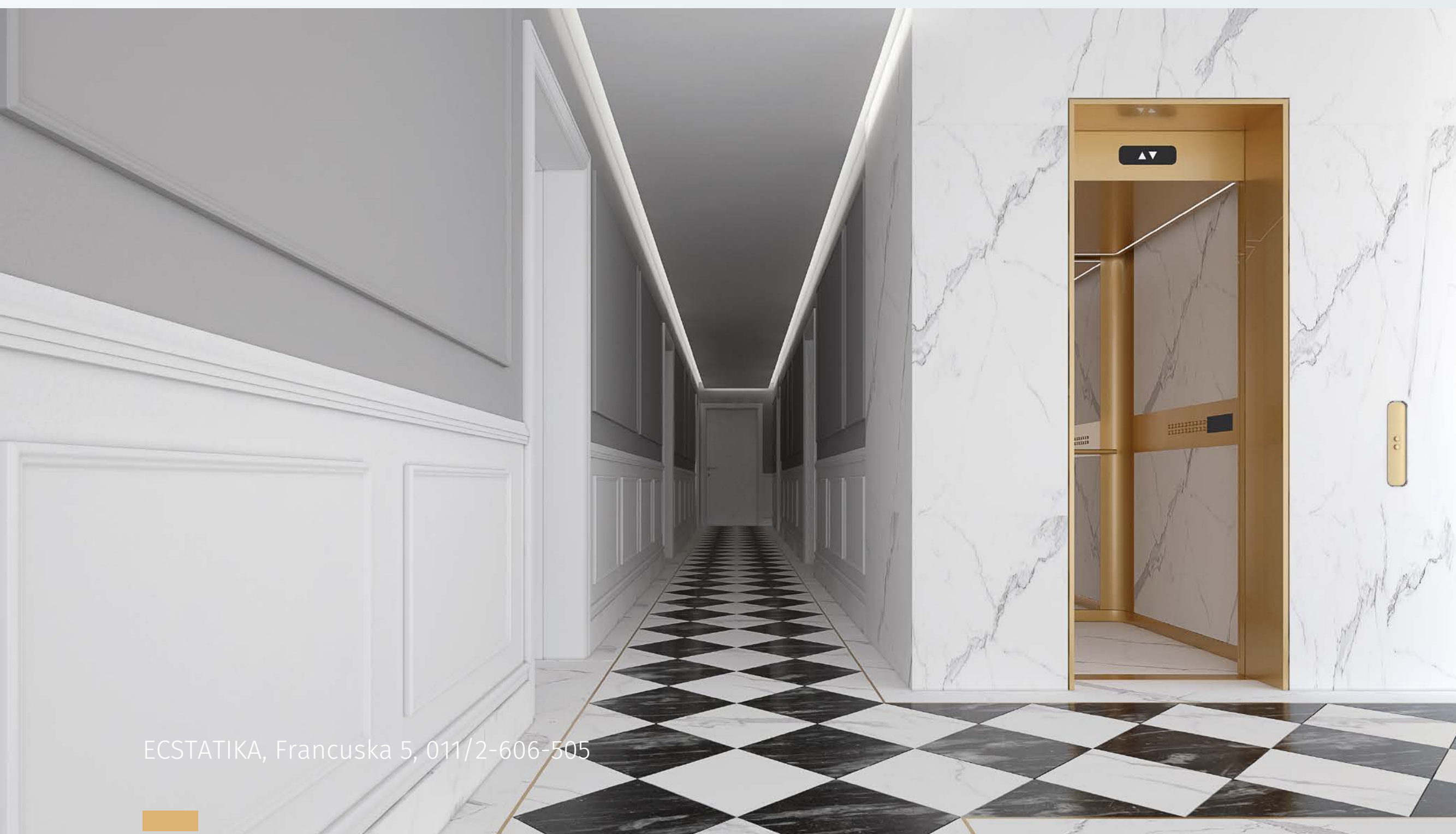
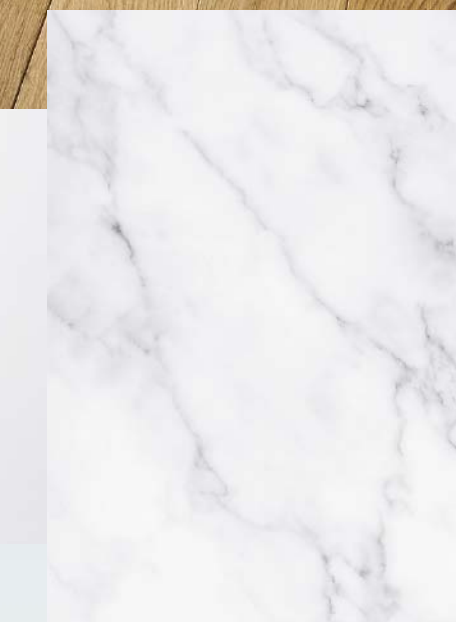
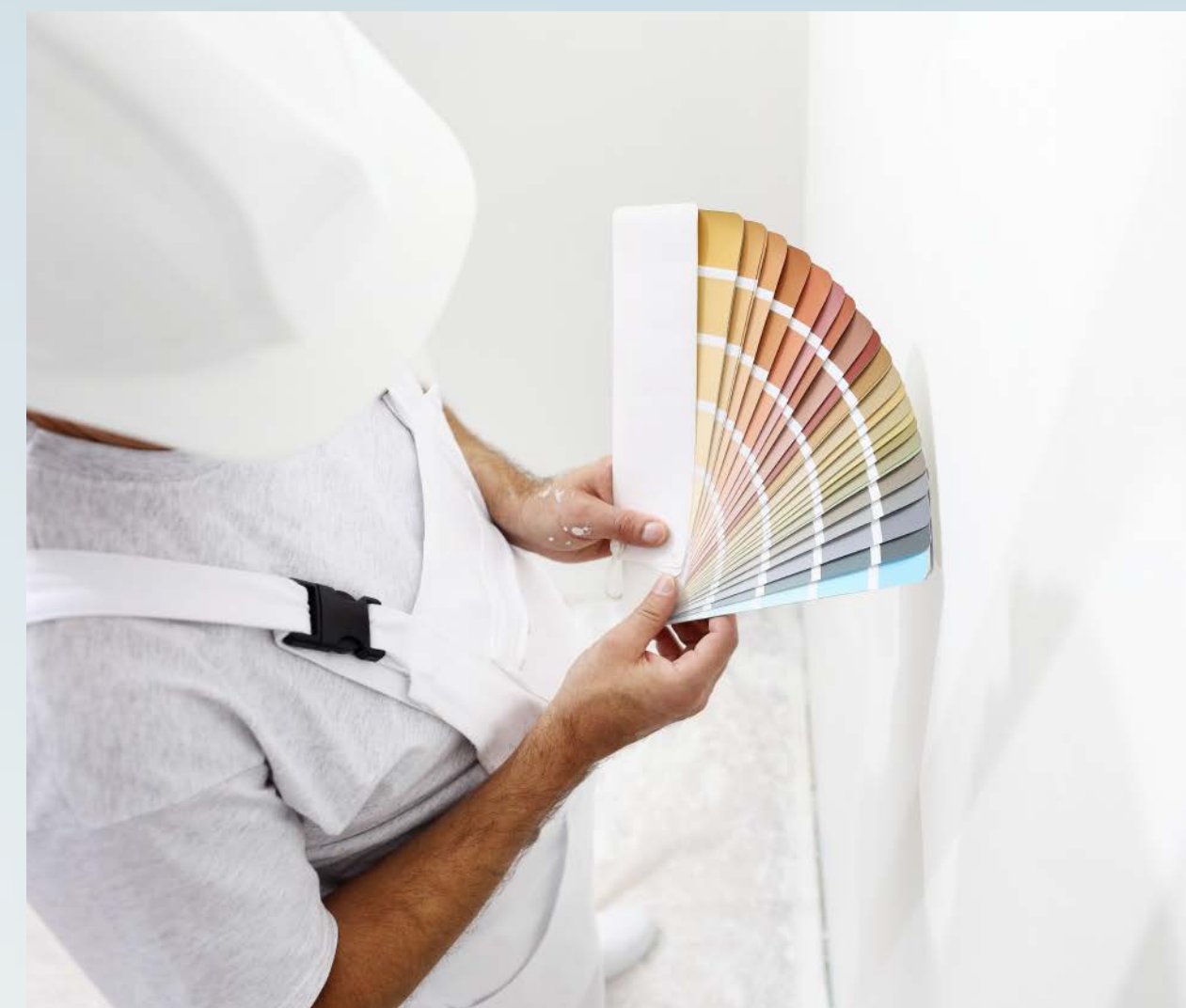
With more than 90 variations of plans for apartments and penthouses, zero tolerance has been made for compromising the quality of construction and functionality of each apartment.

The thermal and acoustic resistance of the whole building is in the pre-war construction level, and they are in accordance with the highest standards in the field of energy efficiency, as evidenced by the energy passport the building has, as an energy efficient building, with reduced electricity and heating consumption.

All residential apartments have access to a common landscaped area full of greenery, in addition to abundant balconies and terraces. Dressed in high quality natural stone, white marble "Carrara bianco", wrought iron on terraces and the highest quality materials on the market in the world, subtle variations in colors and materials create a distinctive identity.

U zgradu su ugrađene najsavremenije građevinske komponente, od kojih treba spomenuti blindirana vrata, uvoznu keramiku i sanitarije prve klase, hrastov parket prve klase, ekološke boje za zidove, interfon sa video nadzorom, alarmni sistem, kao i ugrađeni klima uređaj split sistema.

Objekat stoji kao vanvremensko skulpturalno umetničko delo, savršeno smešteno na uglu i sa obimnim procesom planiranja i dizajnom u svakom kubnom milimetru prostora, da zadovolji potrebe svakog stanara i učini da se oseća prijatno svakog dana u svom novom domu.



The building has state-of-the-art building components, including the mentioned armored doors, imported ceramics and first-floor sanitary ware, first-class oak flooring, eco-friendly wall paints, video surveillance intercom, alarm system, as well as split-system air conditioning .

The building stands as a timeless sculptural work of art, perfectly located on the corner and with an extensive planning process and design in every cubic millimeter of space, to meet the needs of every tenant and make him feel comfortable every day in his new home.





PODACI O STANU

Povrsina: 42 - 45m²

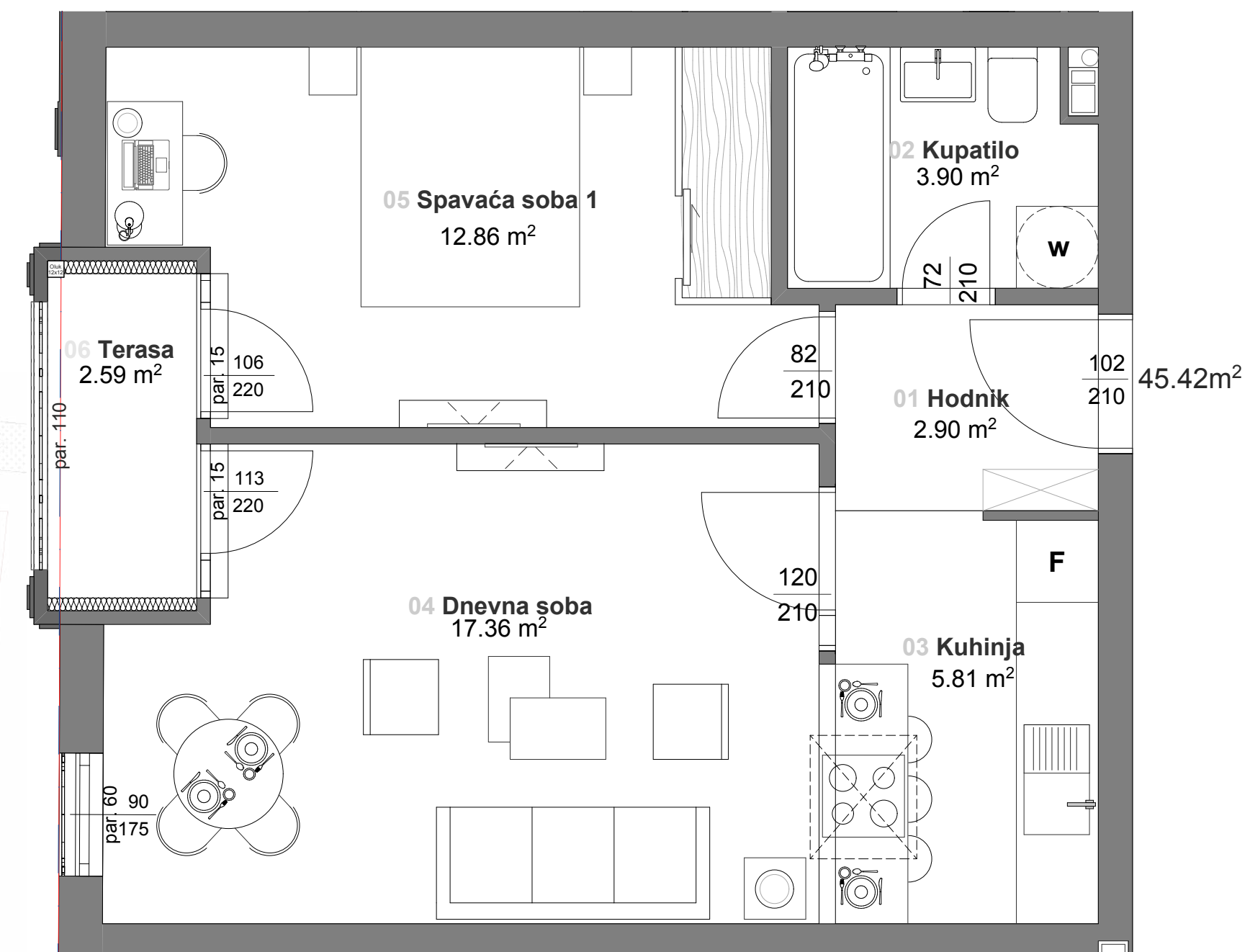
Broj soba: 2

Orijentacija: Zapad

Broj kupatila: 1

Broj WC: 0

OSNOVA STANA



ul. Cvijićeva

ul. Poenkareova



POZICIJA NA ZGRADI

PODACI O STANU

Povrsina: 42.67m²

Broj soba: 2

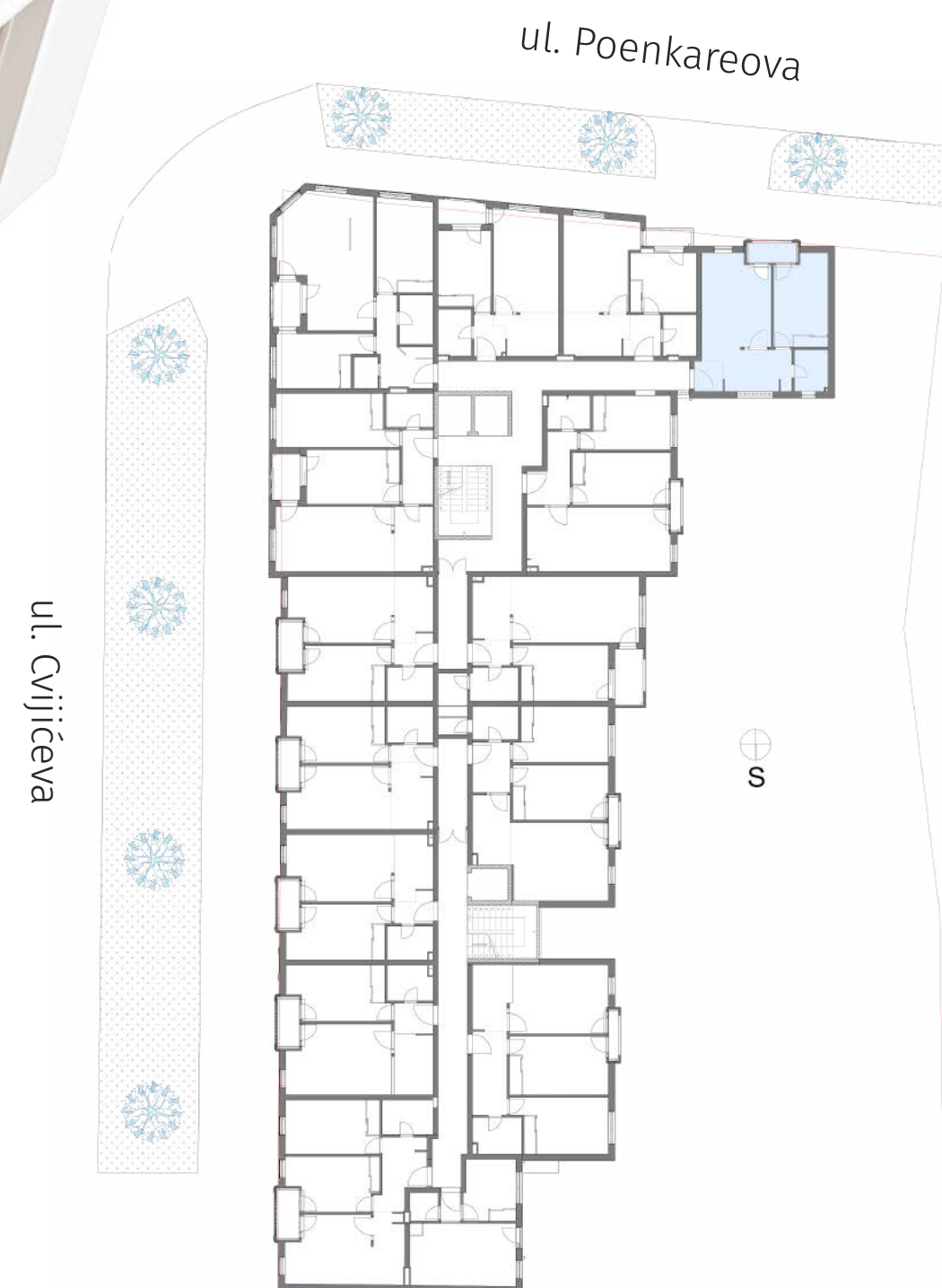
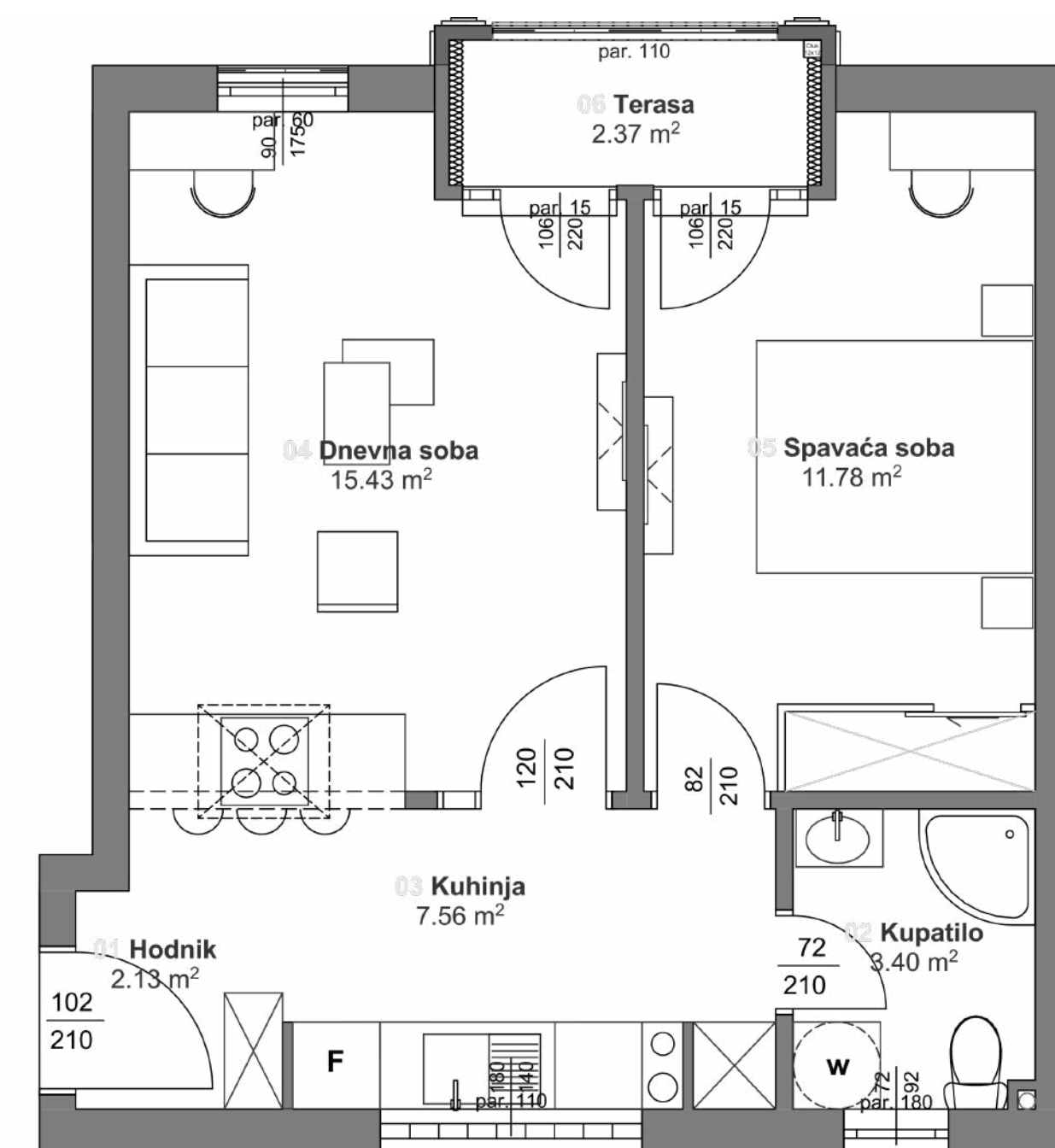
Orijentacija: Jug - Istok - Sever

Broj kupatila: 1

Broj WC: 0



OSNOVA STANA



POZICIJA NA ZGRADI



PODACI O STANU

Povrsina: 40.61m²

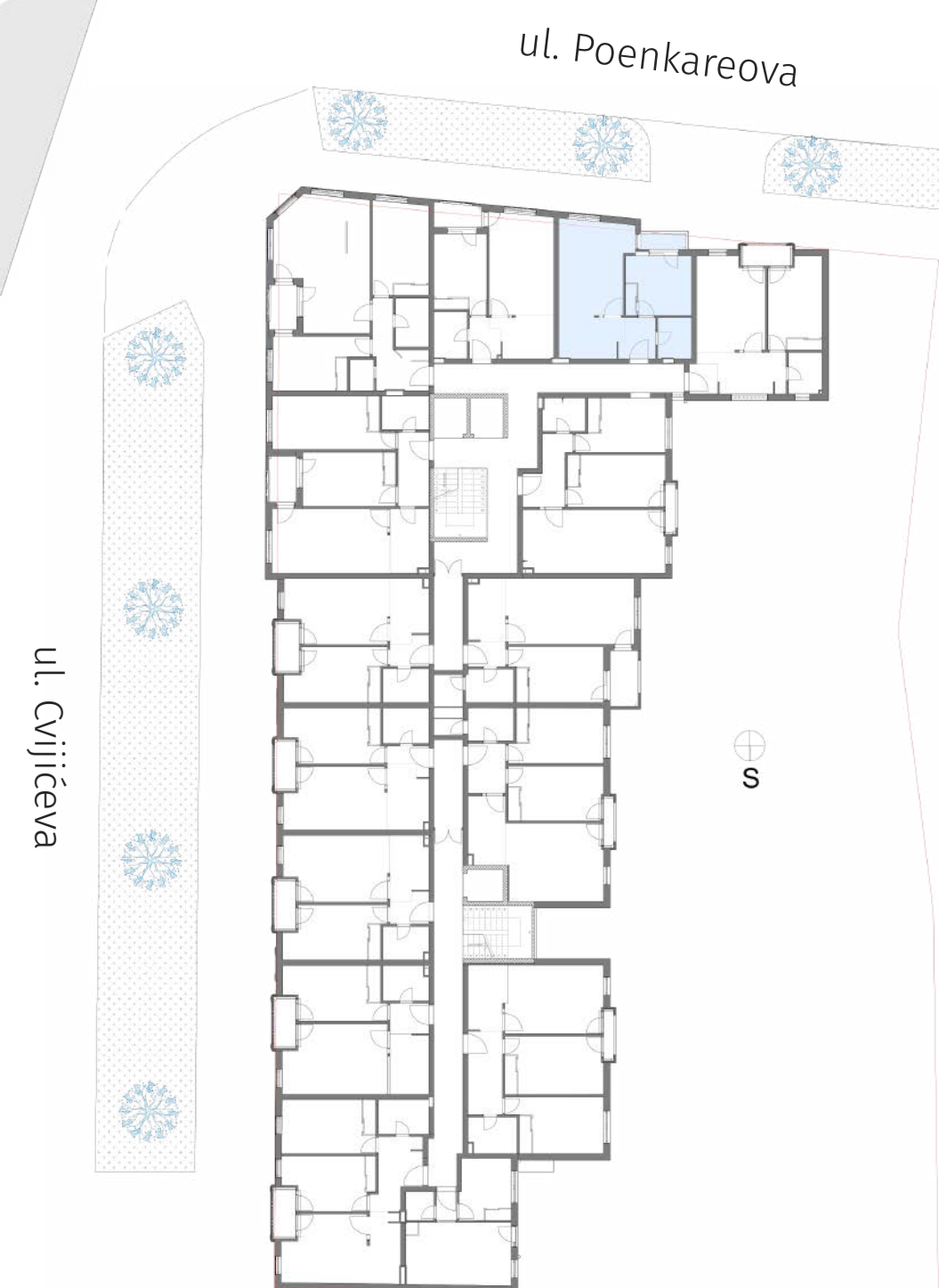
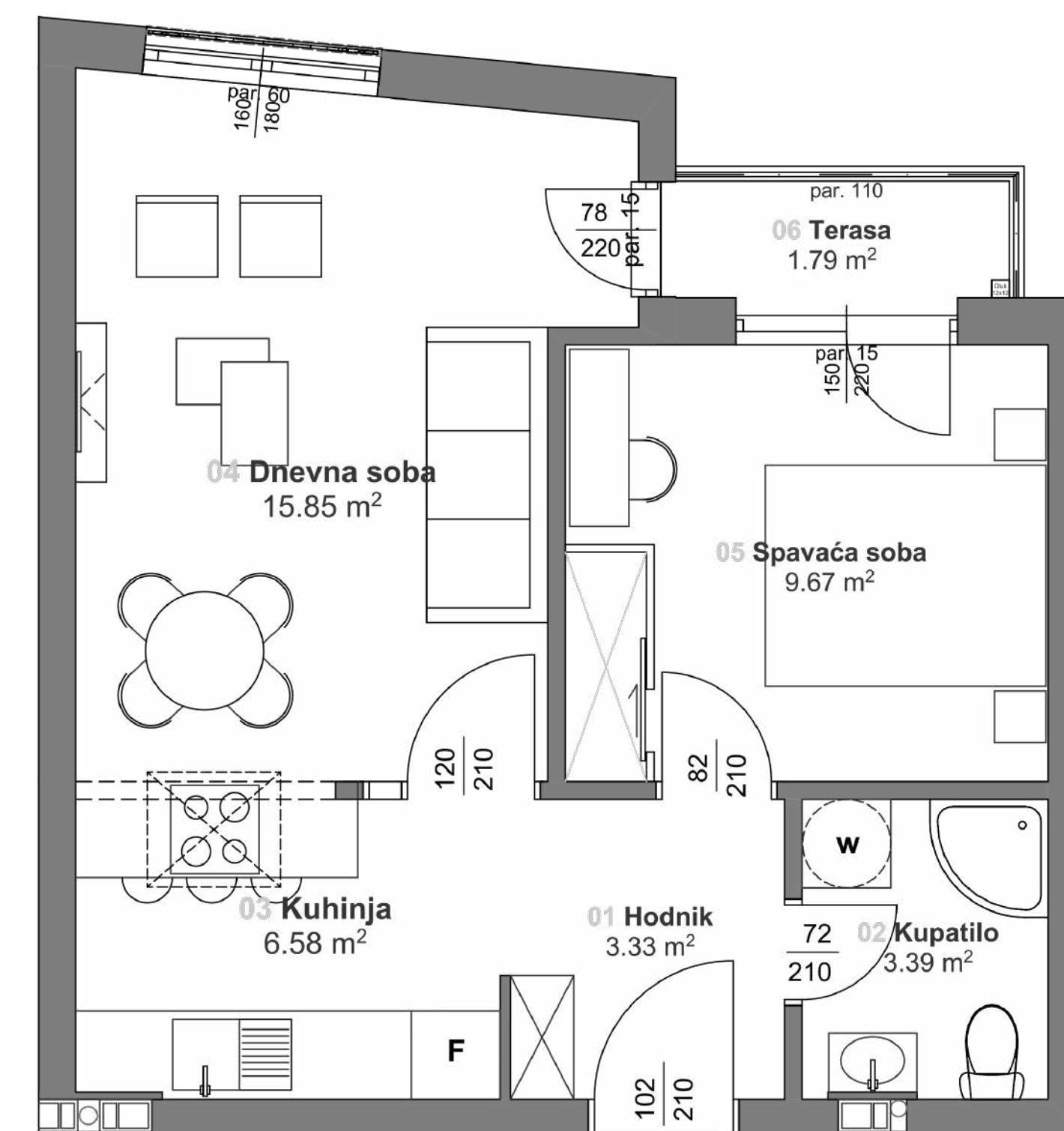
Broj soba: 2

Orijentacija: Jug

Broj kupatila: 1

Broj WC: 0

OSNOVA STANA



POZICIJA NA ZGRADI



PODACI O STANU

Povrsina: 41.52m²

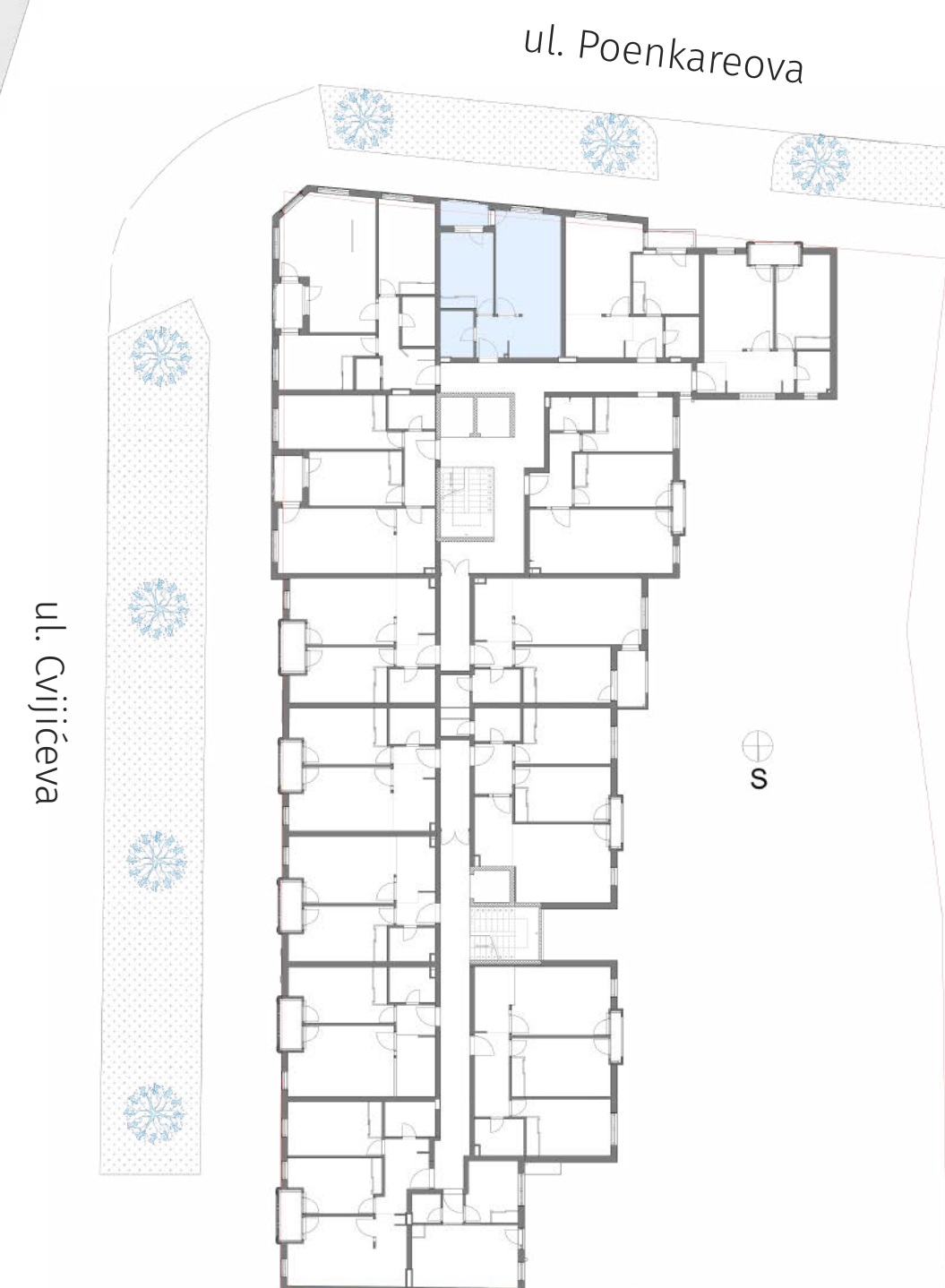
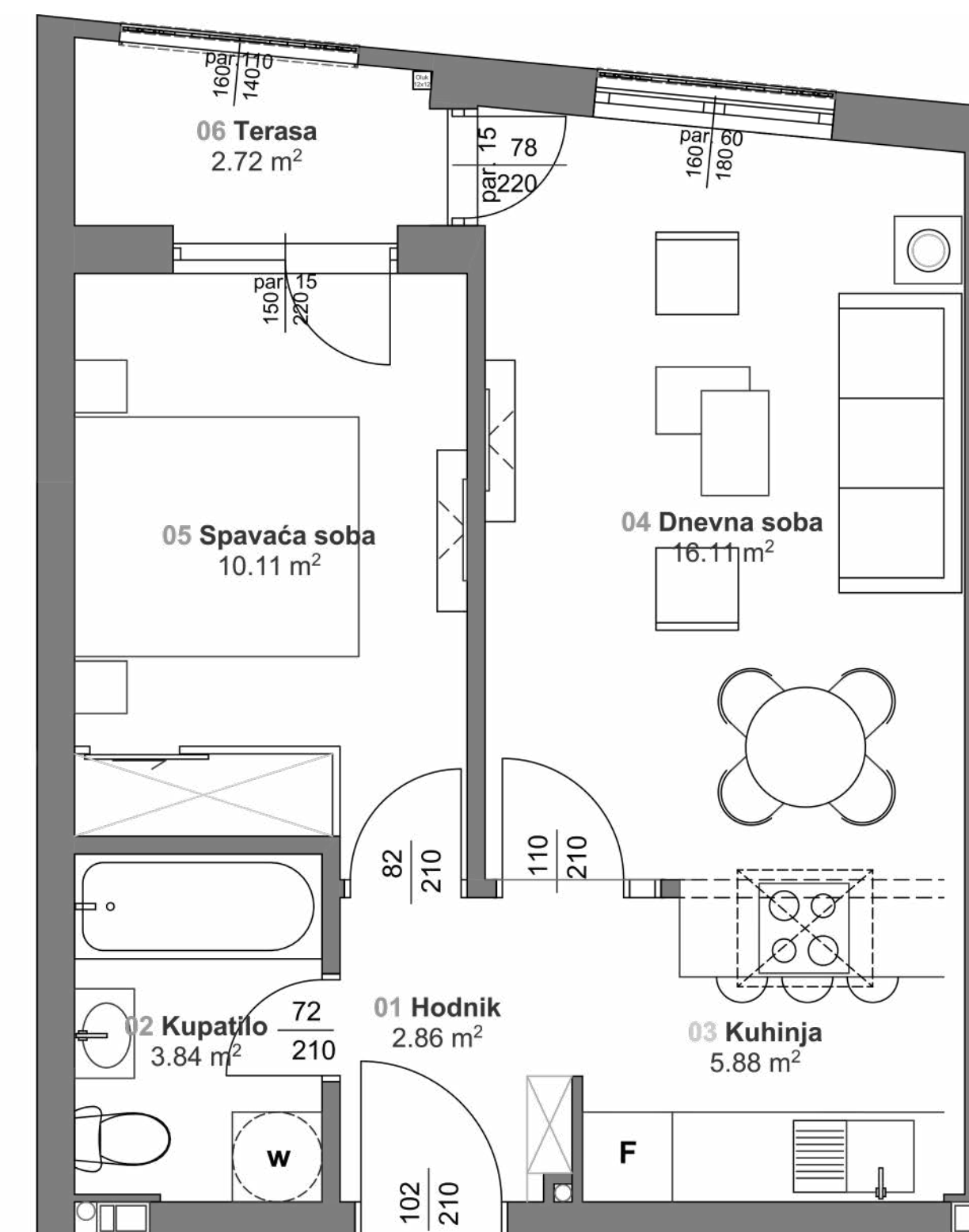
Broj soba: 2

Orijentacija: Jug

Broj kupatila: 1

Broj WC: 0

OSNOVA STANA



POZICIJA NA ZGRADI



PODACI O STANU

Povrsina: 51.30m²

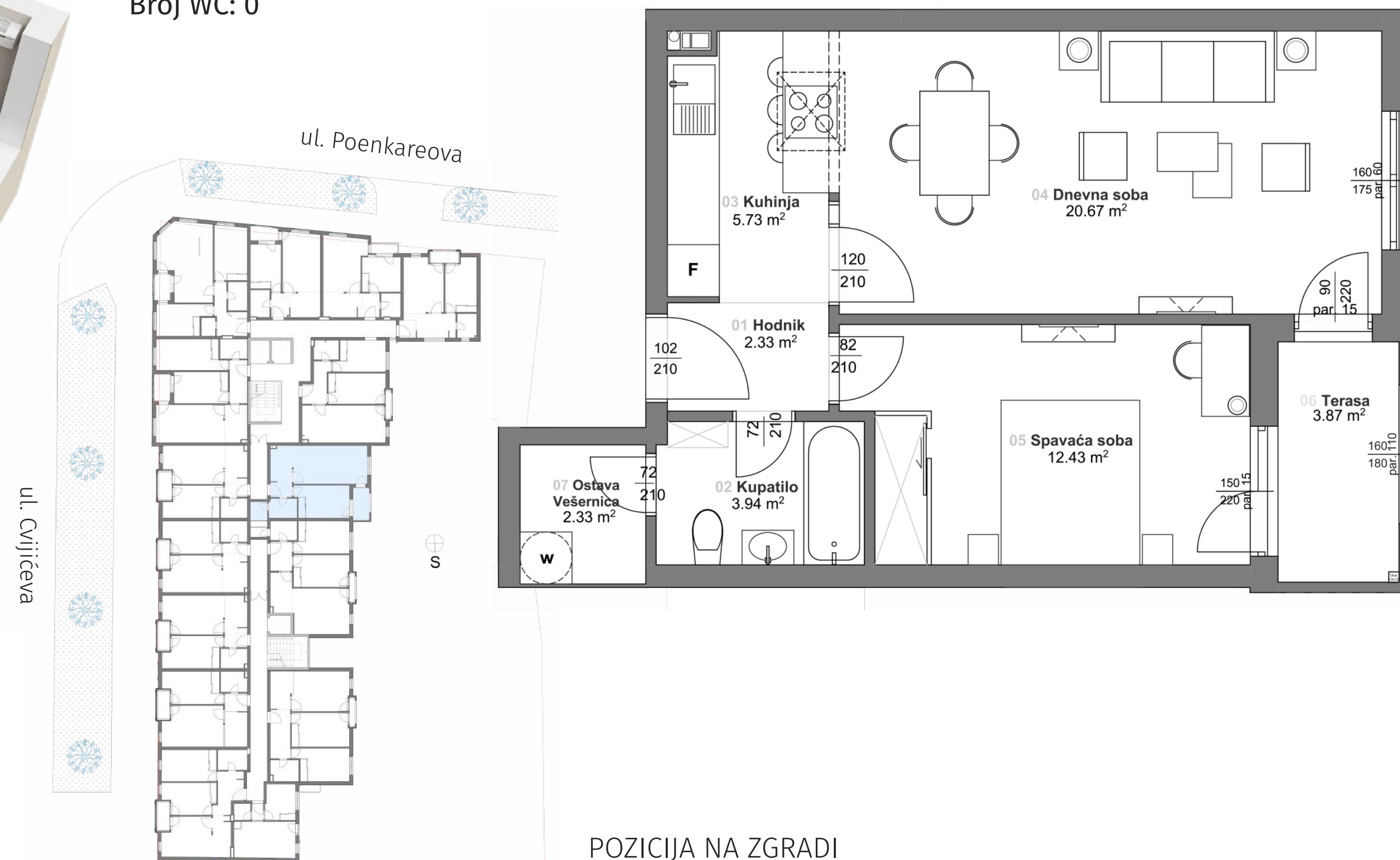
Broj soba: 2

Orijentacija: Istok

Broj kupatila: 1

Broj WC: 0

OSNOVA STANA





PODACI O STANU

Povrsina: 56.57m²

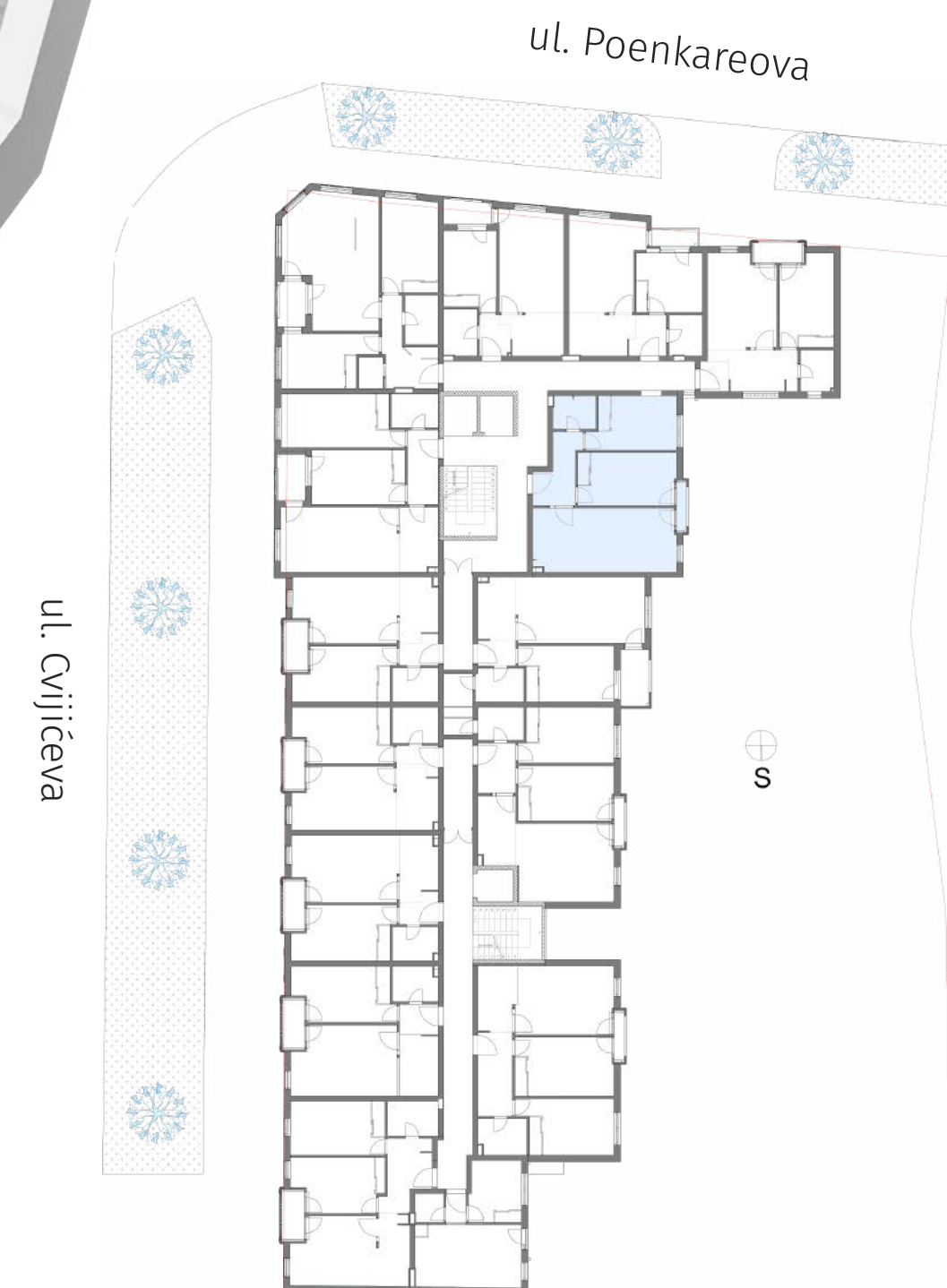
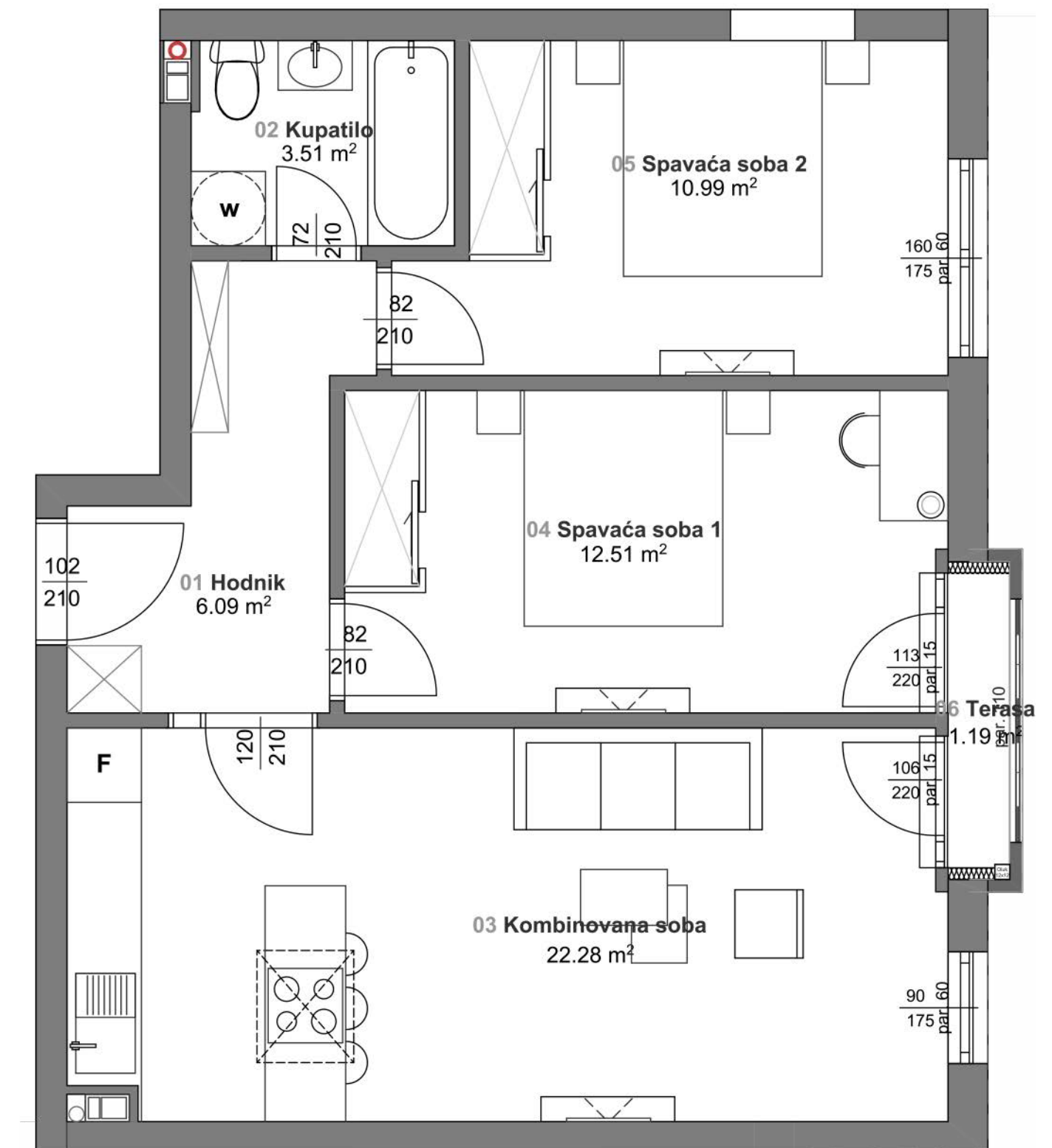
Broj soba: 3

Orijentacija: Istok

Broj kupatila: 1

Broj WC: 0

OSNOVA STANA



POZICIJA NA ZGRADI



PODACI O STANU

Povrsina: 61-65m²

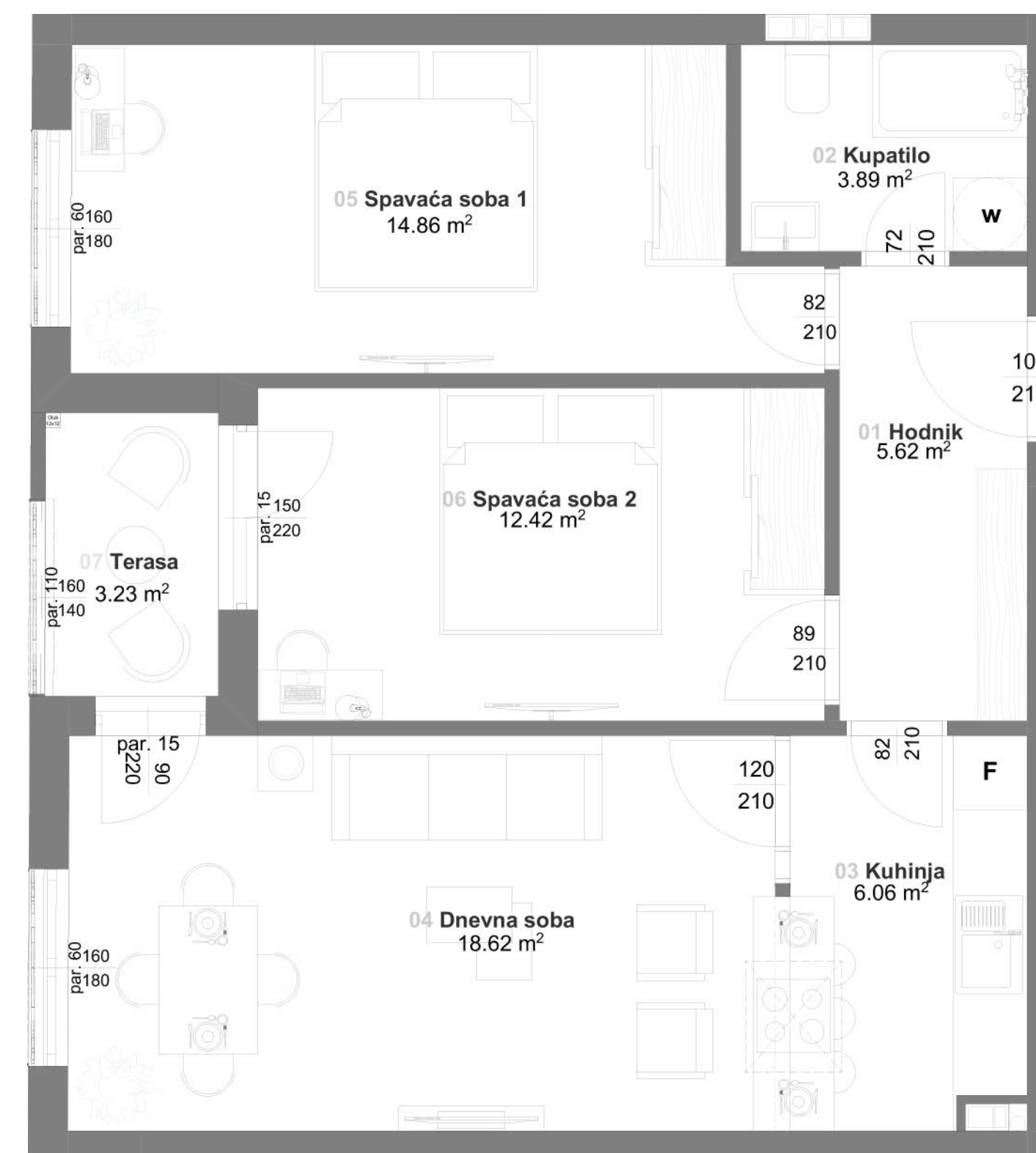
Broj soba: 3

Orijentacija: Zapad / Istok

Broj kupatila: 1

Broj WC: 0 (Opciono)

OSNOVA STANA



POZICIJA NA ZGRADI

PODACI O STANU

Povrsina: 60.83m²

Broj soba: 3

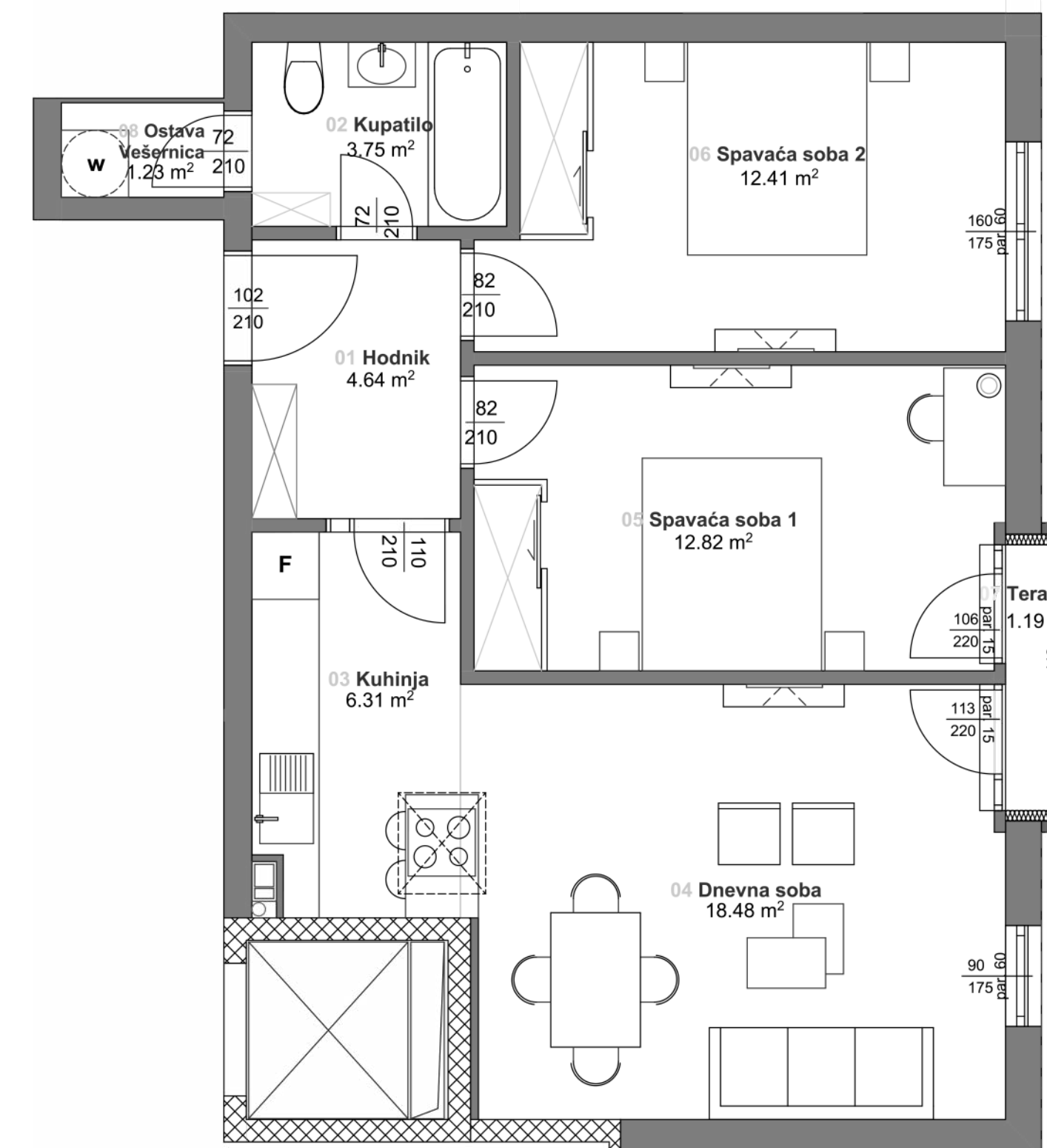
Orijentacija: Istok

Broj kupatila: 1

Broj WC: 0



OSNOVA STANA



POZICIJA NA ZGRADI



PODACI O STANU

Povrsina: 54.54m²

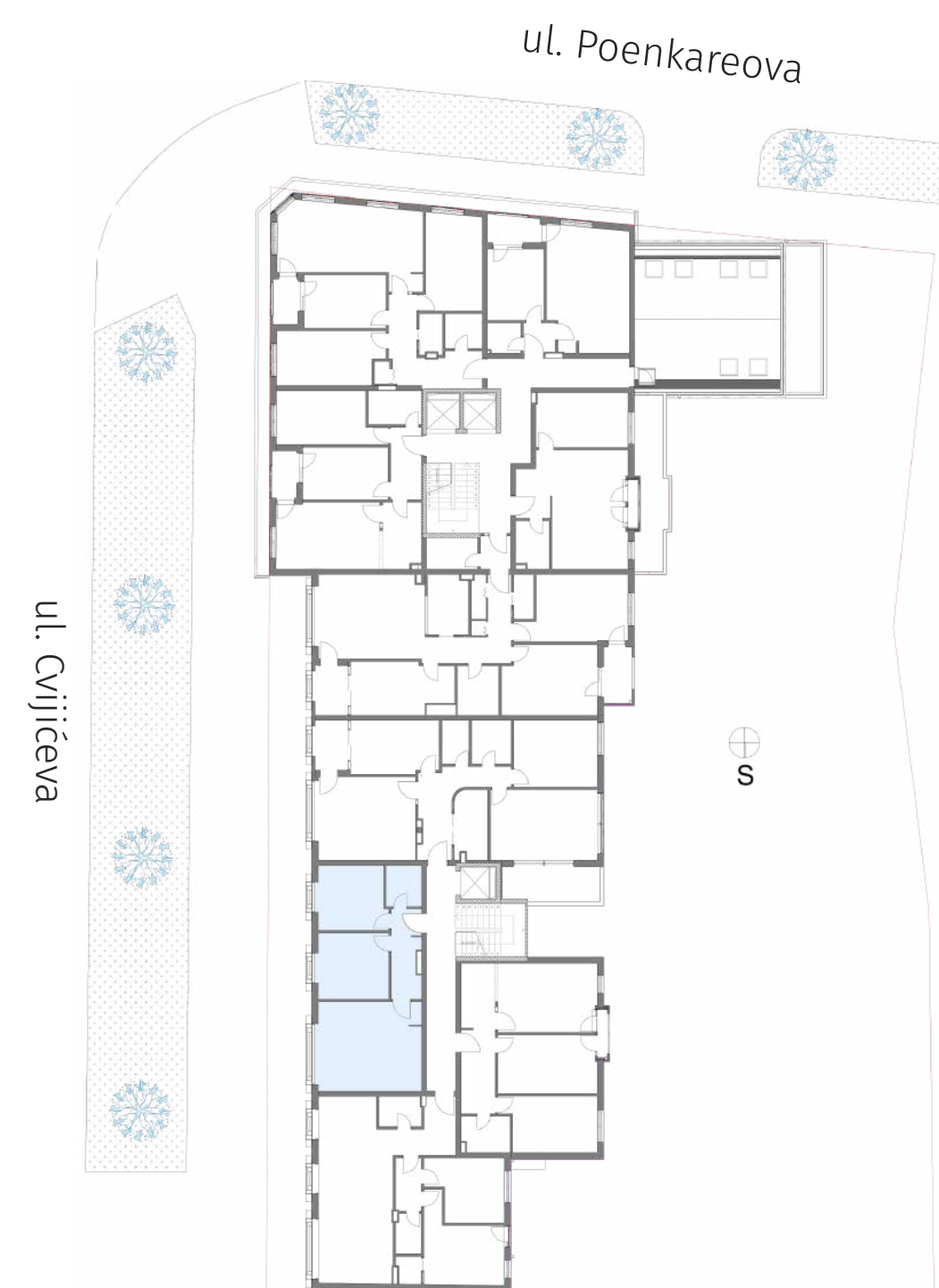
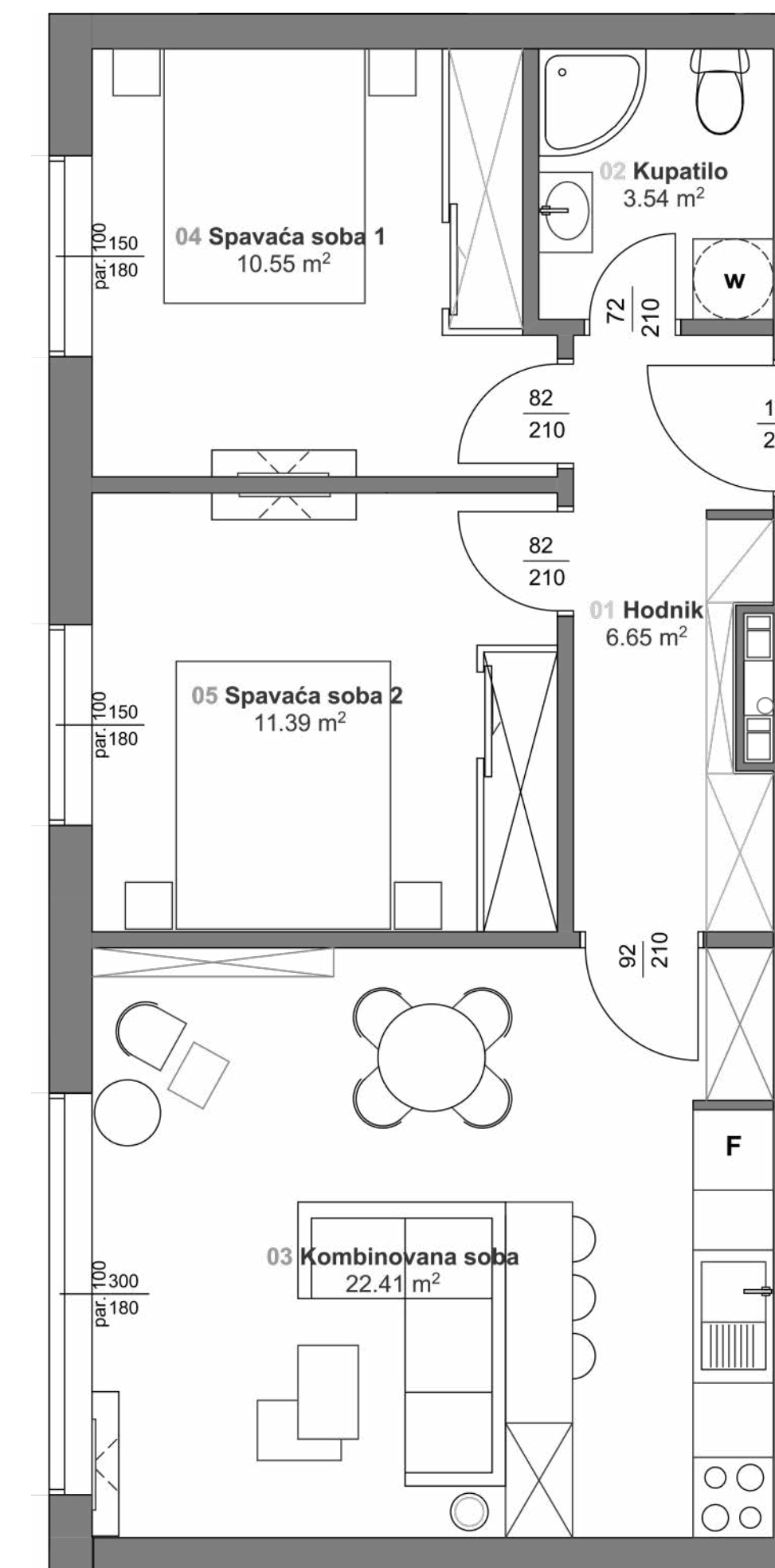
Broj soba: 3

Orijentacija: Istok

Broj kupatila: 1

Broj WC: 0

OSNOVA STANA



POZICIJA NA ZGRADI



PODACI O STANU

Povrsina: 69m²

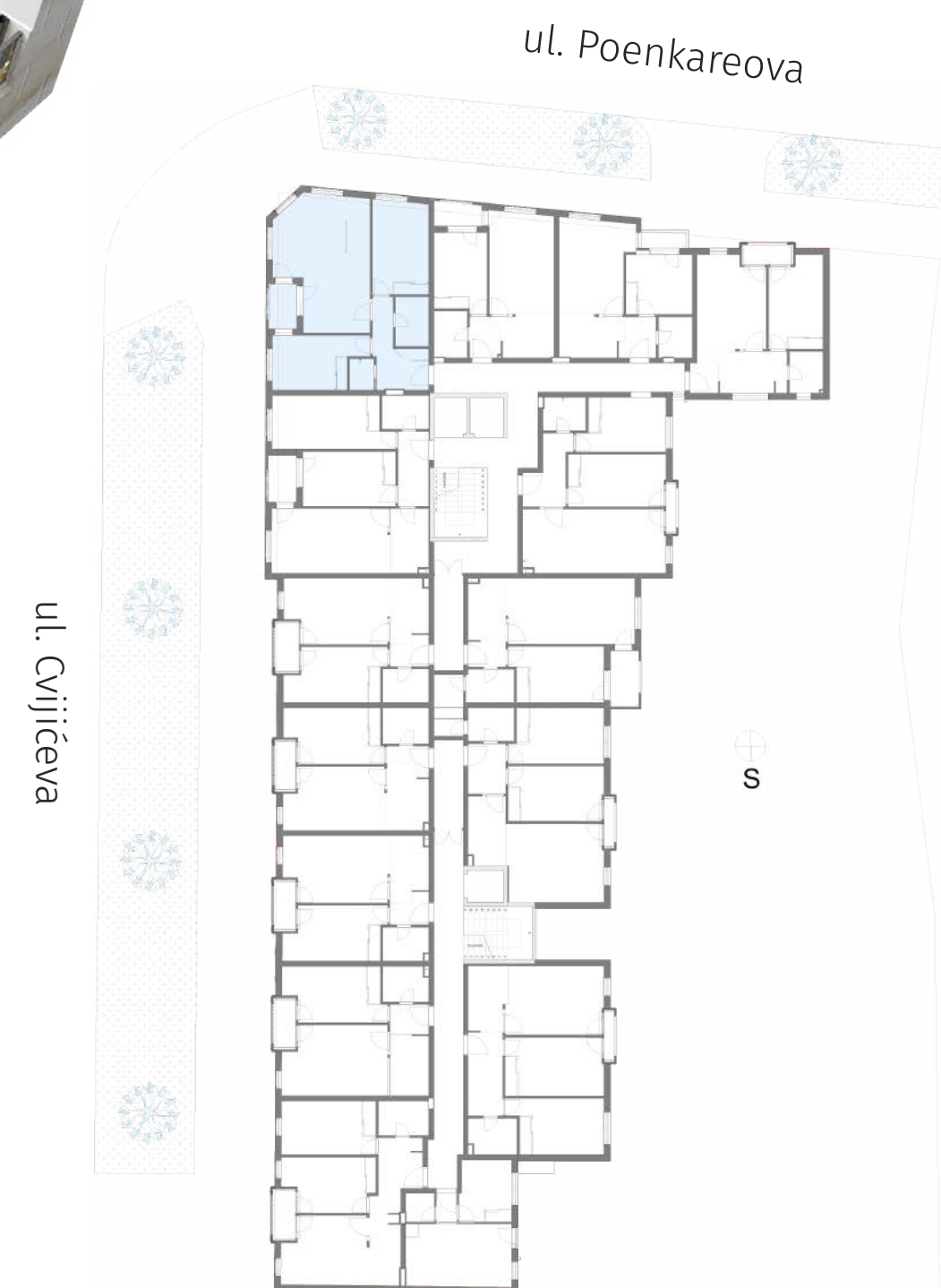
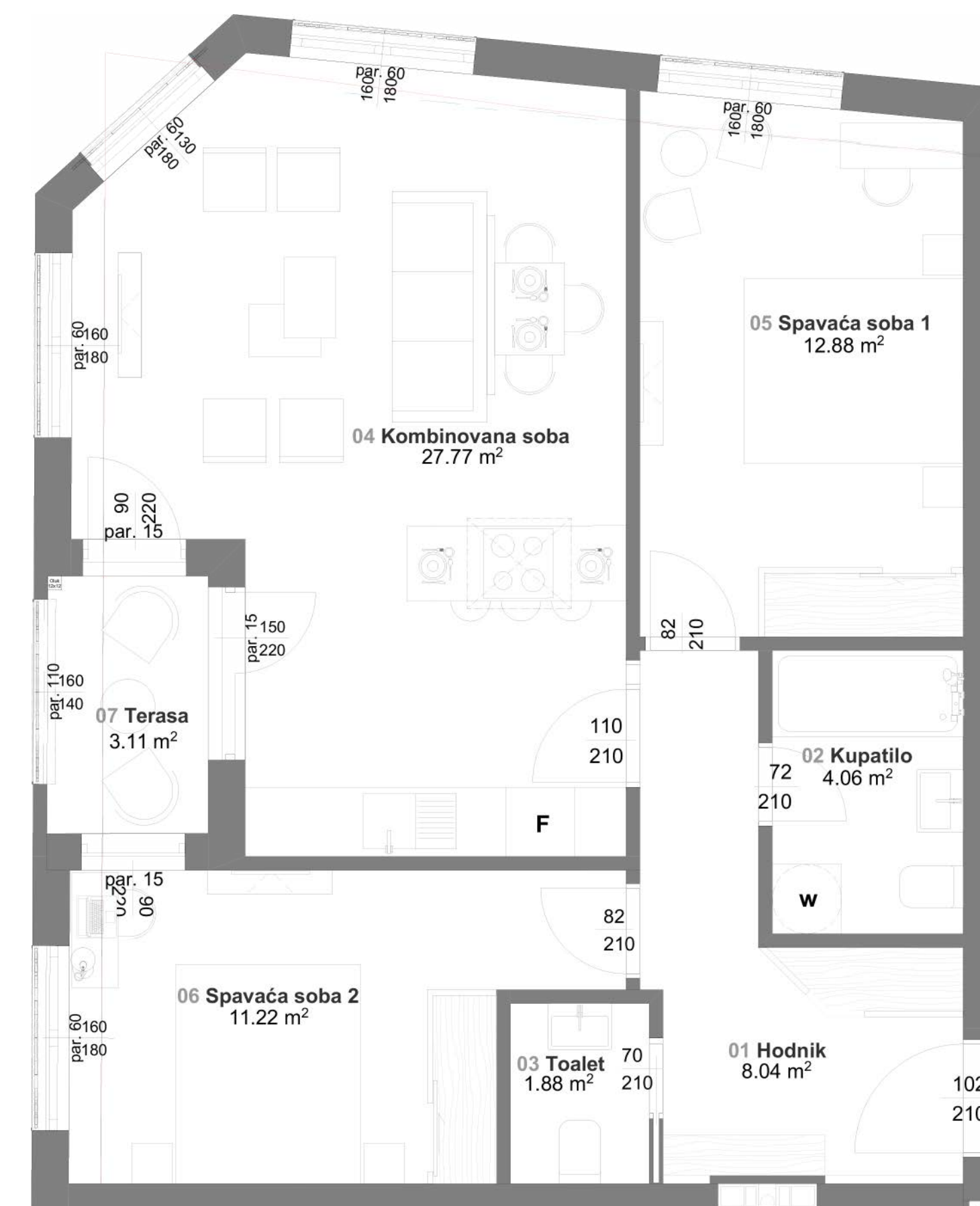
Broj soba: 3

Orijentacija: Zapad-Sever

Broj kupatila: 1

Broj WC: 1

OSNOVA STANA



POZICIJA NA ZGRADI

PODACI O STANU

Površina: 105.8 m²

Broj soba: 4

Orijentacija: Zapad / Istok

Broj kupatila: 1

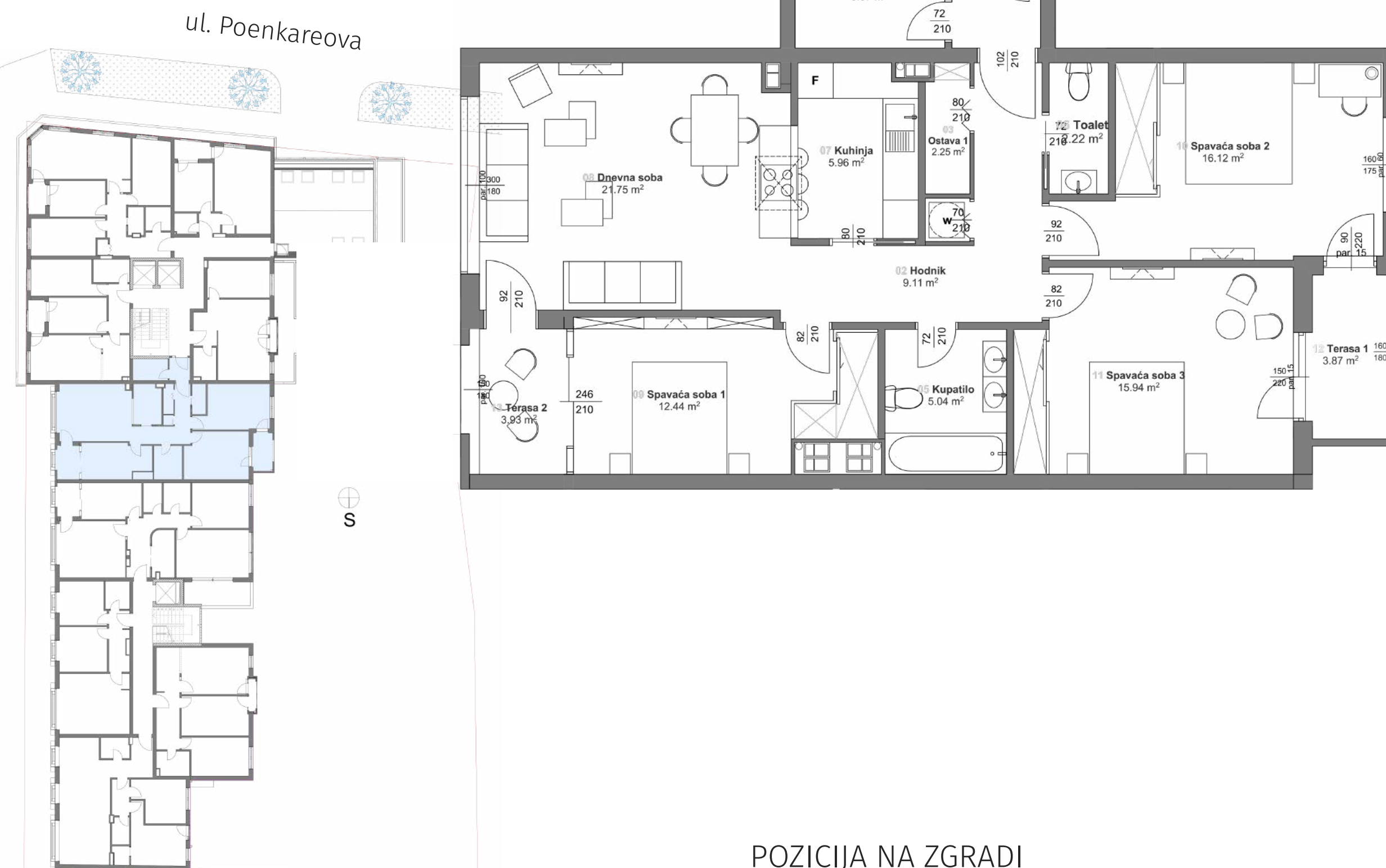
Broj WC: 1

OSNOVA STANA



ul. Cvijićeva

ul. Poenkareova



POZICIJA NA ZGRADI



PODACI O STANU

Površina: 100.29 m²

Broj soba: 4

Orijentacija: Zapad / Istok

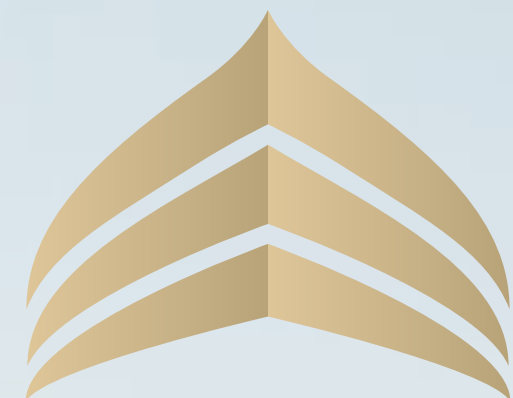
Broj kupatila: 1

Broj WC: 1

OSNOVA STANA



POZICIJA NA ZGRADI



PALATA CVIJIĆEVA
Nova dimenzija luksuza



Magnat Real Estate Investments
Francuska 5, 11000 Beograd



011/2-606-505 • 064/40-99-222 • 064/40-99-333
064/40-99-200 • 064/40-99-700



info@ecstatika.com

